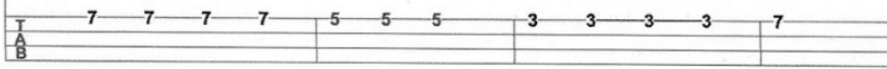
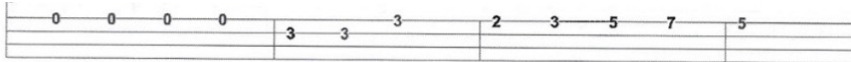


Jolly Old St. Nicholas
4/4 Time Strumming pattern: D Du D Du

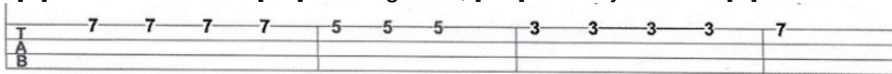
[C] Jolly old Saint [G7] Nich-o-las. [Am] Lean your ear this [C] way!



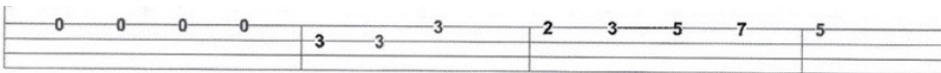
[F] Don't you tell a [C] sin-gle soul [G7] what I'm going to say.



[C] Christ-mas Eve is [G7] com-ing soon, [Am] Now my dear old [C] man



[F] Whis-per what you'll [C] bring to me, [G7] Tell me, if you [C-HOLD] can. 2-3-4



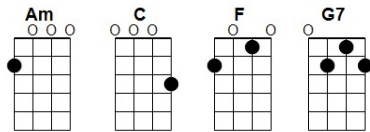
[C] When the clock is [G7]strik-ing twelve, [Am] When I'm fast a- [C] -sleep.
 [F] Down the chim-ney [C] broad and black [G7] with your pack you'll creep.
 [C] All the stock-ings [G7] you will find [Am] Hang-ing in a [C] row;
 [F] Mine will be the [C] short-est one, [G7] You'll be sure to [C-HOLD] know. 2-3-4

[C] John-ny wants a [G7] pair of skates, [Am] Su-sy wants a [C] sled;
 [F] Nel-lie wants a [C] pic-ture book [G7] Yellow, blue and red;
 [C] Now I think I'll [G7] leave to you [Am] What to give the [C] rest;
 [F] Choose for me, dear [C] San-ta Claus, [G7] You will know the [C-HOLD] best. 2-3-4

Instrumental Outro:

[F] Choose for me, dear [C] San-ta Claus, **SLOWER:** [G7] You will know the [C-HOLD] best.

GCEA



BARI

