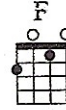
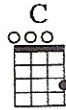




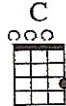
SWEET CAROLINE (Neil Diamond)

Verse
Moderately (♩ = ♪)



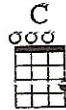
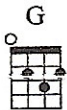
1. Where it be - gan, —
(2.) look at the night, —

I can't be -
and it don't



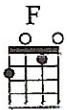
gin to know - in',
seem so lone - ly.

but then I know — it's grow - in'
We fill it up — with on - ly



strong.
two.

Was in the spring, —
And when I hurt, —



and spring be - came the sum - mer.
hurt - in' runs off my shoul - ders.

Who'd have be - lieved —
How can I hurt —

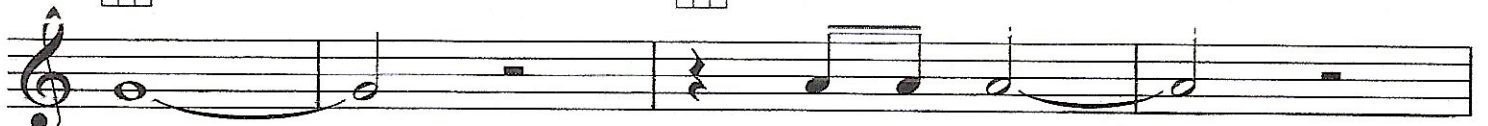
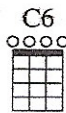
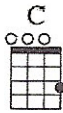


— you'd come — a - long? —
— when hold - in' you? —

Copyright © 1969 TALLYRAND MUSIC, INC.
Copyright Renewed

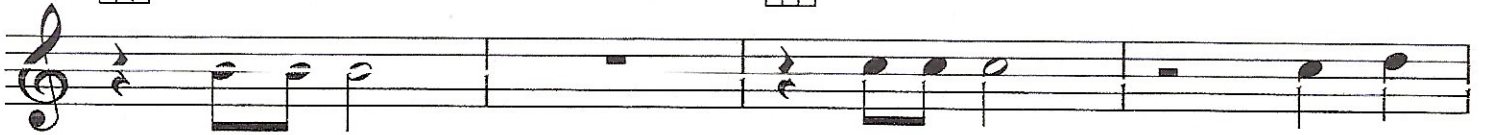
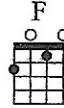
All Rights Administered by UNIVERSAL TUNES, A Division of SONGS OF UNIVERSAL, INC.
All Rights Reserved Used by Permission

Pre-Chorus



Hands, _____
Warm, _____

touch - in' hands, _____
touch - in' warm, _____

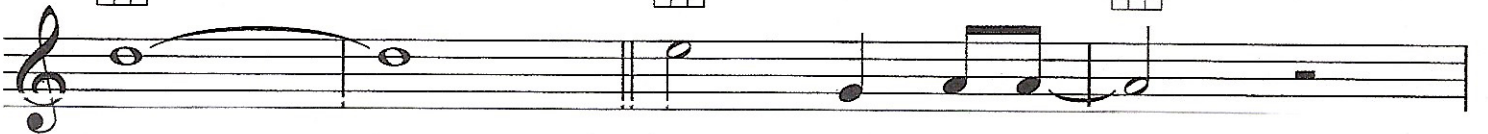
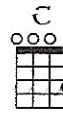


reach - in' out,

touch-in' me,

touch - in'

Chorus



you. _____

Sweet

Car - o - line, _____



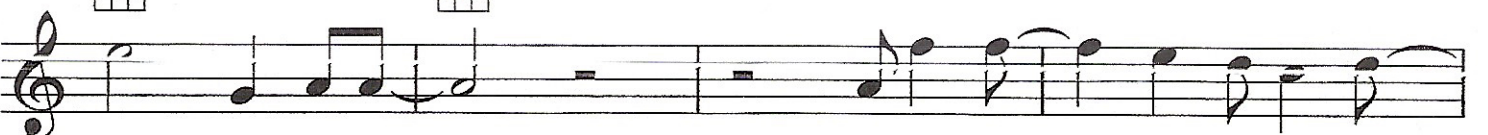
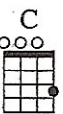
good times

nev - er

seemed _____

so

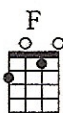
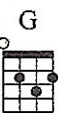
good.



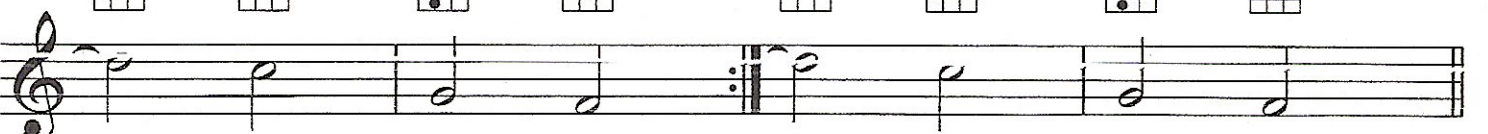
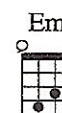
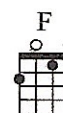
I've been in - clined _____

to be - lieve _____ they nev - er would. .

1.



2.



2. But

now

I

Oh,

no,

no.

G7(no3rd)



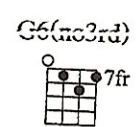
G7sus2



TAB

2 0 1 2 0 1 0 1 0 2 1 3 0 1 2

Gsus2



TAB

0 3 1 0 3 1 0 2 3 0 2 3 2 0 2

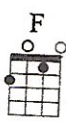
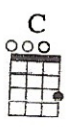
Outro-Chorus



Sweet Car - o - line, _____ good times



nev - er seemed _ so good.



Sweet Car - o - line, _____ I be - lieve _____



_____ they nev - er could. _____

Repeat and fade