

CHRISTMAS TREE LIGHTING 2022

- 1. Jingle Bells**
- 2. Deck the Halls**
- 3. Joy to the World**
- 4. O Christmas Tree**
- 5. Silent Night**
- 6. We Wish You a Merry Christmas**

JINGLE BELLS

SPEED: 130 bpm; 4/4 time (island strum swing!)

INTRO (Instrumental): [F] [C] [G7] [C] (4 BEATS EACH)

STRUM OR TAB: [C] Jingle bells, jingle bells **[C]** Jingle all the way

[F] Oh, what fun it **[C]** is to ride

In a **[G7]** one-horse open sleigh, **[G - 1 beat]** hey!

[C] Jingle bells, jingle bells **[C]** Jingle all the way

[F] Oh what fun it **[C]** is to ride

In a **[G7]** one-horse open **[C]** sleigh

STRUM: [C] Dashing through the snow,

In a one-horse open **[F]** sleigh

O'er the fields we **[G7]** go

Laughing all the **[C]** way!

[C] Bells on bobtails ring

Making spirits **[F]** bright

What fun it is to **[G7]** ride and sing

A sleighing song to- **[C]** night, **[G7- 1 beat]** oh!

STRUM OR TAB: [C] Jingle bells, jingle bells **[C]** Jingle all the way

[F] Oh, what fun it **[C]** is to ride

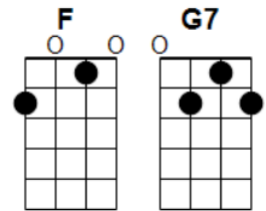
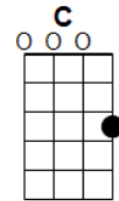
In a **[G7]** one-horse open sleigh, **[G- 1 beat]** hey!

[C] Jingle bells, jingle bells **[C]** Jingle all the way

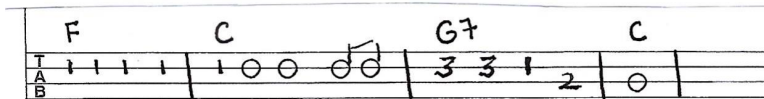
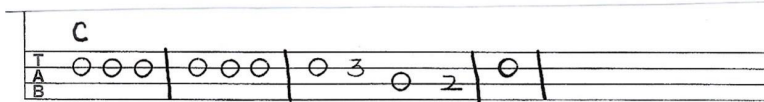
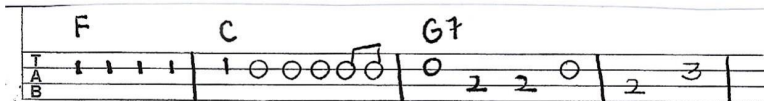
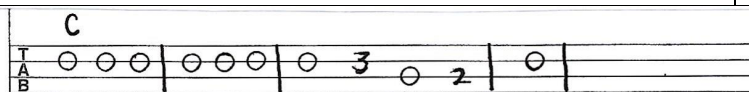
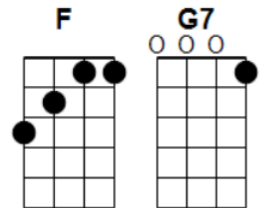
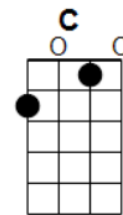
[F] Oh what fun it **[C]** is to ride

In a **[G7]** one-horse open **[C- 2 beats]** sleigh **[G7- 2 beats]** **[C- STOP]**.

GCEA TUNING:



BARITONE TUNING:



C

T
A
B

F C G7

T
A
B

C

T
A
B

F C G7 C

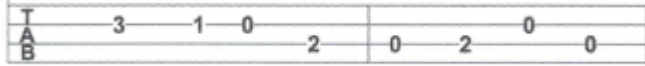
T
A
B

DECK THE HALLS

SPEED: 100 bpm; 4/4 time (strum pattern: D—DU—D—DU)

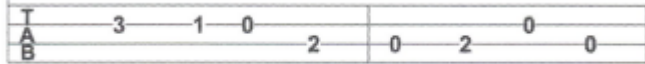
INTRO: (instrumental): [F] Fa la la la, [C] la, la [G7] la la [C] la

[C] Deck the halls with boughs of holly



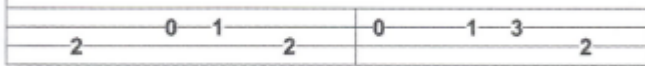
[F] Fa la la la, **[C]** la, la **[G7]** la la **[C]** la

[C] 'Tis the season to be jolly



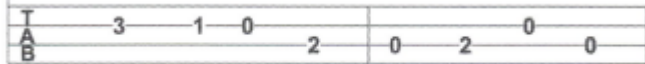
[F] Fa la la la, **[C]** la, la **[G7]** la la **[C]** la

[G7] Don we now our **[C]** gay apparel



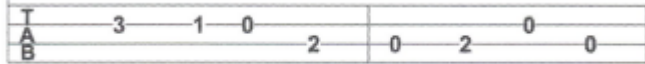
[C] Fa la la, **[Am]** la, la, la **[G7]** la la la

[C] As we sing the Yuletide carol



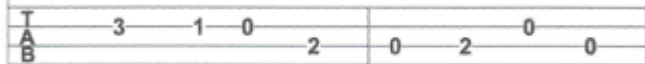
[F] Fa la la la, **[C]** la, la **[G7]** la la **[C-STOP]** la

[C] See the blazing Yule before us



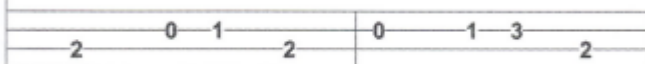
[F] Fa la la la, **[C]** la, la **[G7]** la la **[C]** la

[C] Strike the harp and join the chorus



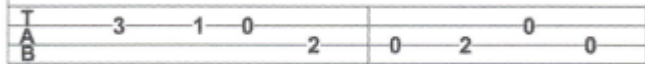
[F] Fa la la la, **[C]** la, la **[G7]** la la **[C]** la

[G7] Follow me in **[C]** merry measure



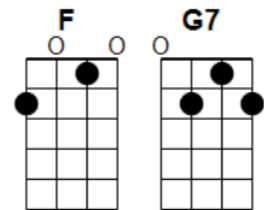
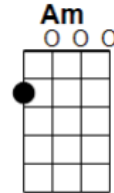
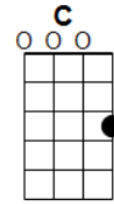
[C] Fa la la, **[Am]** la, la, la **[G7]** la la la

[C] As we sing of yuletide treasure

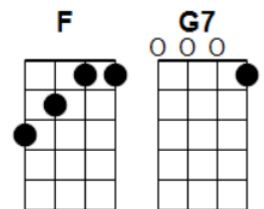
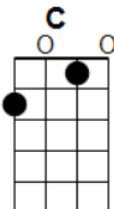
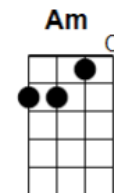


[F] Fa la la la, **[C]** la, la **[G7]** la la **[C-STOP]** la

GCEA TUNING



BARITONE:



JOY TO THE WORLD

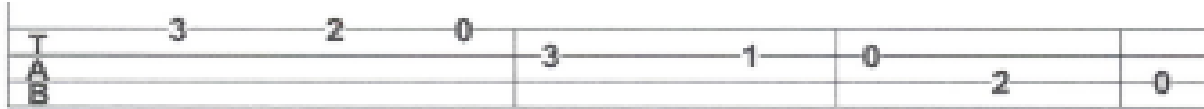
SPEED: 95 bpm; 2/4 time (Strum: D—U—D—U)

INTRO (Instrumental): [C] Heaven, and Heaven,
and [G7] nature [C] sing.

[C] Joy to the world, the [G7] Lord is [C] come
Let [F] Earth re- [G7] ceive her [C] King [2-3-4]
Let [F] every [C] heart pre- [F] pare Him [C] room
And [C] Heaven and nature sing
And [G7] Heaven and nature sing
And [C] Heaven, and Heaven, and [G7] nature [C] sing.

SINGLE STRUMS (or tab):

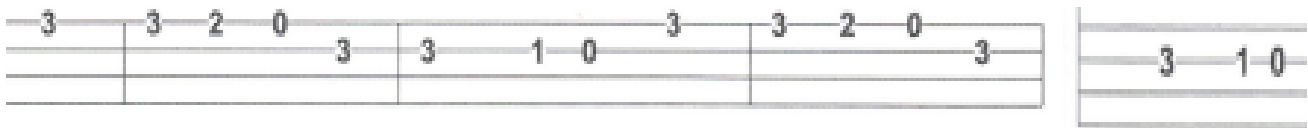
[C] Joy to the [C] Earth, the [G7] Savior [C] reigns



Let [F] all their [G7] songs em- [C] ploy [2-3-4]



While [F] fields and [C] floods, rocks, [F] hills and [C] plains



FULL STRUMS:

Re- [C] peat the sounding joy
Re- [G7] peat the sounding joy
Re- [C] peat, repeat, the [G7] sounding [C] joy.

[C] He rules the world with [G7] truth and [C] grace
And [F] makes the [G7] nations [C] prove [2-3-4]
The [F] glories [C] of His [F] righteous- [C] ness
And [C] wonders of His love
And [G7] wonders of His love
And [C] wonders, wonders, [G7] of His [C- STOP] love.

O CHRISTMAS TREE

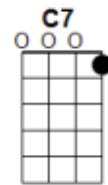
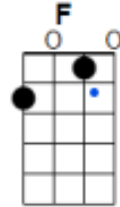
SPEED: 95 bpm; 3/4 time (Strum pattern: D—DU—D)

INTRO (instrumental only): [F] Christmas tree, O Christmas tree,
Thy [C7] leaves are so un- [F] changing!

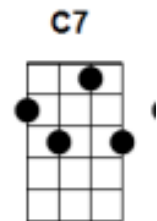
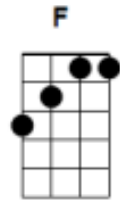
[SING!] O [F] Christmas Tree, O Christmas tree,
Thy [C7] leaves are so un-- [F] changing!
O [F] Christmas Tree, O Christmas tree,
Thy [C7] leaves are so un- [F] changing!
Not [F] only green when [C7] summer's here,
But also when tis [F] cold and drear.
O [F] Christmas tree, O Christmas tree,
Thy [C7] leaves are so un- [F] changing!

O [F] Christmas Tree, O Christmas tree,
Such [C7] pleasure do you [F] bring me!
O [F] Christmas Tree, O Christmas tree,
Such [C7] pleasure do you [F] bring me!
For [F] every year this [C7] Christmas tree
Brings to us such [F] joy and glee
O [F] Christmas tree, O Christmas tree,
Such [C7] pleasure do you [F- 2 beats] bring me!

GCEA Tuning



BARI:



SILENT NIGHT

SPEED: 80 bpm; ¾ time (strum pattern: D—DU—D)

INTRO: [C] 3 beats, G7 (3 beats), [C] 6 beats (instrumental
“sleep in heavenly peace”)

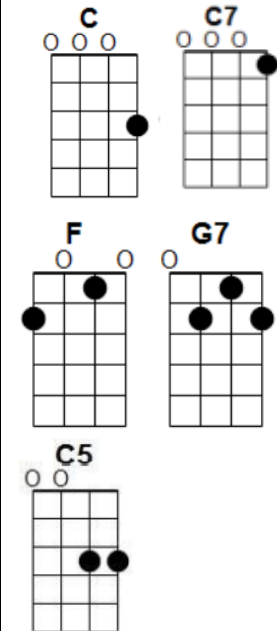
[Easy (notes in black); intermediate (notes in red)]

[C] [C5] Silent [C] night, [C5] holy [C] night!
[G7] [G7 add 5th fret 1st string] All is [G7] calm,
[C] [C] all is [C5 1&2] bright. [C7 on 3]
[F] [F] Round yon [F Add C] Virgin,
[C] [C5] Mother and [C] Child.
[F] [F] Holy [F Add C] infant so
[C] [C5] tender and [C] mild,
[G7] [G7 add 5th fret 1st string] Sleep in heavenly
[C] [C] pe— [slide finger to 7th fret of A string] —eace,
[C] [C-C5-C] Sleep in
[G7] [G7 - G7(lift finger off A string) - G7] heavenly
[C] [C] peace [C] [C].

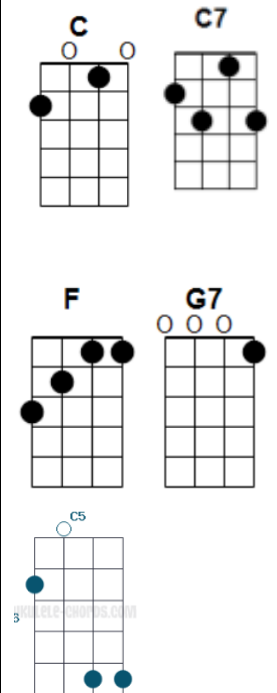
[C] Silent night, [C] holy night!
[G7] Shepherds quake [C] at the sight. [C 1-2] [C7 1 Strum]
[F] Glories stream from [C] heaven afar
[F] Heavenly hosts sing [C] Alleluia,
[G7] Christ the Savior is [C] born!
[C] Christ the [G7] Savior is [C] born [C].

[C] Silent night, holy night!
[G7] Son of God [C] love's pure light. [C 1-2] [C7 1 Strum]
[F] Radiant beams from [C] Thy holy face
[F] With dawn of re- [C] deeming grace,
[G7] Jesus Lord, at Thy [C] birth
[C] Jesus [G7] Lord, at Thy [C] birth. [C-STOP]

GCEA TUNING



BARITONE:



WE WISH YOU A MERRY CHRISTMAS

SPEED: 100 bpm; $\frac{3}{4}$ time (strum pattern: D—DU—DU)

INTRO (instrumental): Good [C] tidings for [G] Christmas and a [F] happy [G7] new [C] year.

We [C] wish you a merry [F] Christmas
We [D7] wish you a merry [G] Christmas
We [E7] wish you a merry [Am] Christmas
and a [F] happy [G7] new [C] year [NC/STOP]

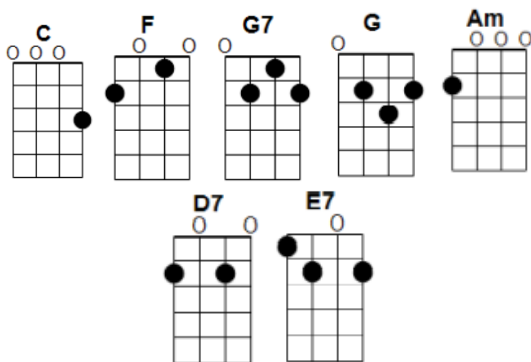
Good [C] tidings we [G] bring to [D7] you and your [G] kin
Good [C] tidings for [G] Christmas
and a [F] happy [G7] new [C] year. [NC/STOP]

Now [C] bring us some figgy [F] pudding,
Now [D7] bring us some figgy [G] pudding
[E7] bring us some figgy [Am] pudding
and a [F] cup of [G7] good [C] cheer! [NC/STOP]

We [C] won't go until we [F] get some,
We [D7] won't go until we [G] get some
We [E7] won't go until we [Am] get some
so [F] bring it [G7] right [C] here! [NC/STOP]

We [C] wish you a merry [F] Christmas
We [D7] wish you a merry [G] Christmas
We [E7] wish you a merry [Am] Christmas
and a [F] happy [G7] new [C] year [NC/STOP]

GCEA TUNING



BARITONE

